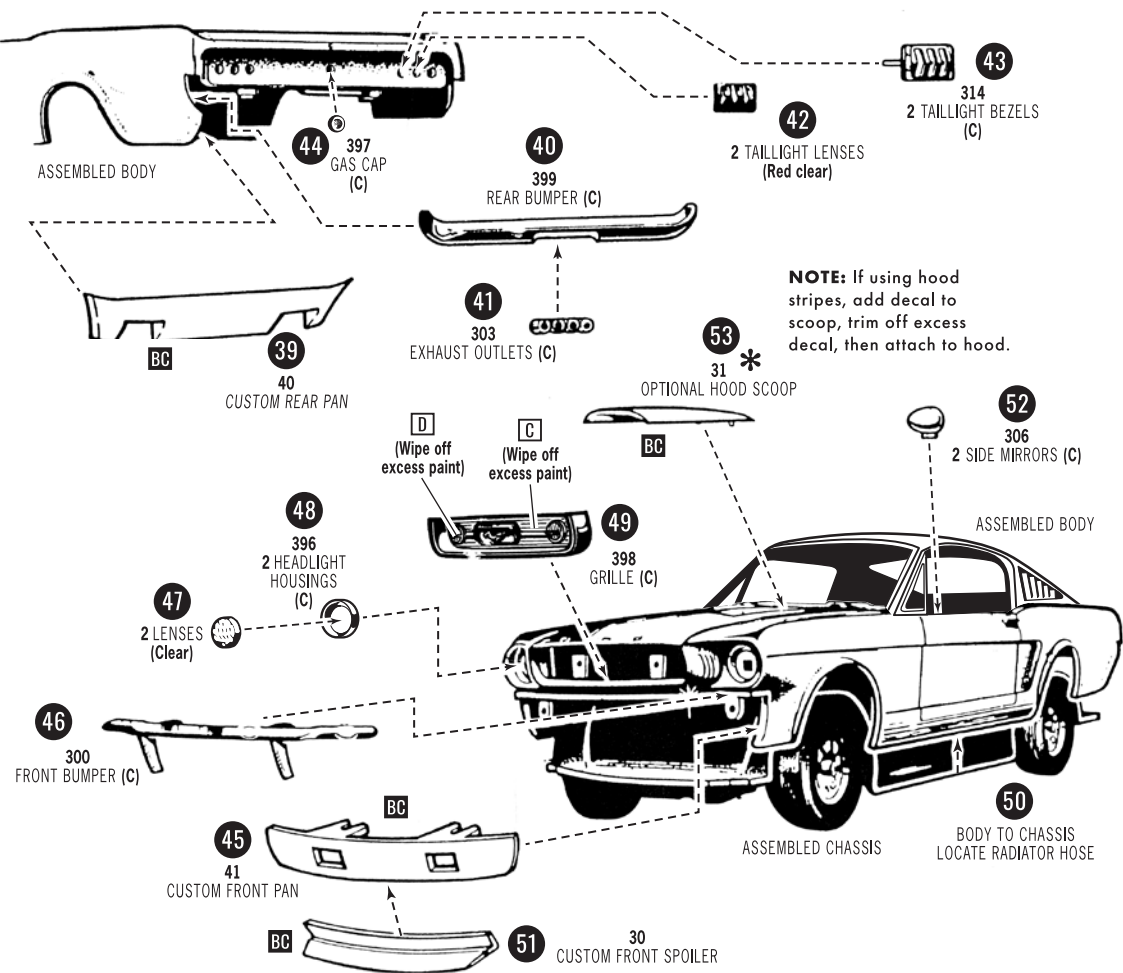


FINAL ASSEMBLY - CUSTOM 39 - 53



PAINT COLORS

A	Black	Q	Yellow
B	Flat Black	R	Tan
C	Semi-Gloss Black	S	Brown
D	White	T	Lt. Blue
E	Flat White	U	Med. Blue
F	Silver	V	Dark Blue
G	Chrome (Bright Silver)	W	Transparent Blue
H	Aluminum	X	Lt. Green
I	Steel	Y	Dark Green
J	Brass	WG	Woodgrain
K	Gold	AA	Ford Engine Blue
L	Amber	IC	Interior Color
M	Transparent Amber	BC	Body Color
N	Red	▲	Semi-Gloss
O	Transparent Red	▲	Gloss
P	Orange	▲	Metallic

EXTERIOR COLORS

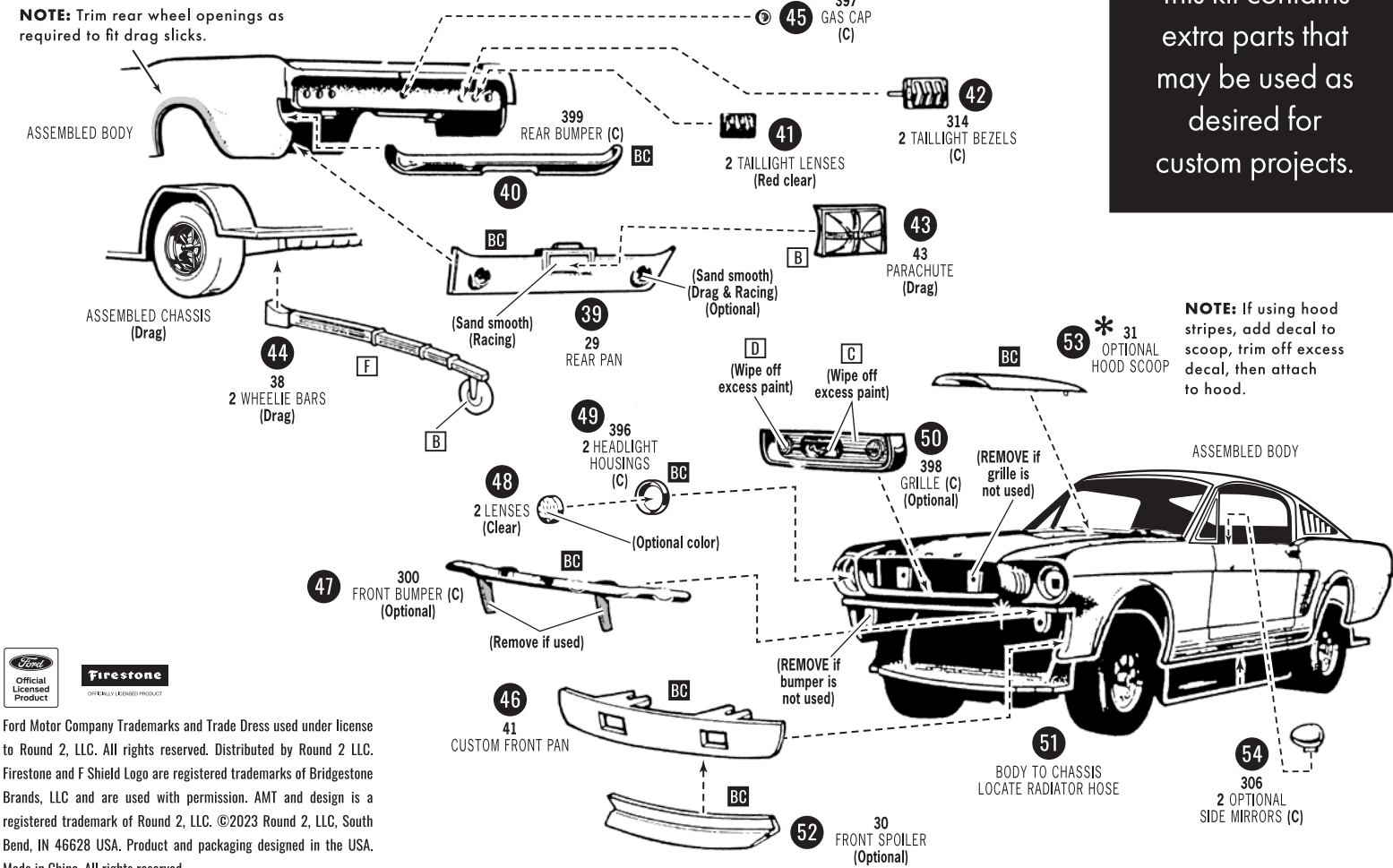
Standard Colors Include: Silver Frost, Signal Flare Red, Springtime Yellow, Raven Black, Arcadian Blue, Sahara Beige, Nightmist Blue, Wimbledon White, Antique Bronze, Ivy Green Metallic, Candy Apple Red, Tahoe Turquoise Metallic, Emberglo, Vintage Burgundy Metallic, Silver Blue and Sauterne Gold.

INTERIOR COLORS

Standard Colors Include: Light Blue, Medium Blue, Red, Black, Light Aqua, Medium Aqua and Parchment.



FINAL ASSEMBLY - DRAG or RACING 39 - 54



SPECIAL NOTE: This kit contains extra parts that may be used as desired for custom projects.

1966

FORD MUSTANG GT FASTBACK



amt
A1305-200

READ THIS BEFORE YOU BEGIN

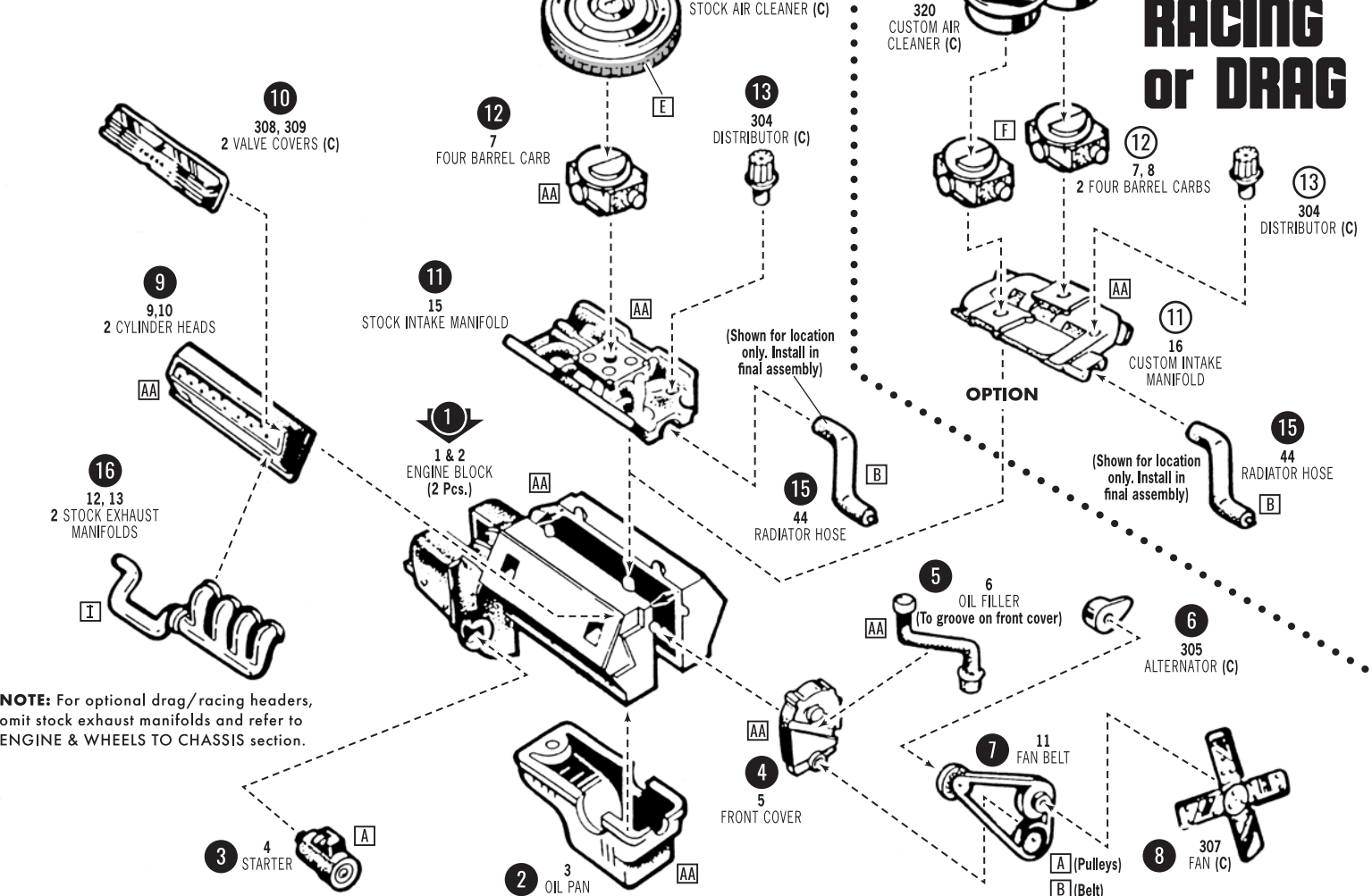
This kit may be built more than one way. Look over this instruction sheet carefully before you begin building. You may decide to combine parts from the different versions shown, or use parts from other AMT® kits. After you've planned your car, follow the assembly instructions and "TEST FIT" the parts without cementing. This will familiarize you with the location of parts.

For best results, the various sub-assemblies and components should be painted before any "CHROME" parts are attached. For example: When attaching "NON CHROME" engine parts, it is best to cement them in place and paint as a unit. "CHROME" PARTS ARE INDICATED BY (C).

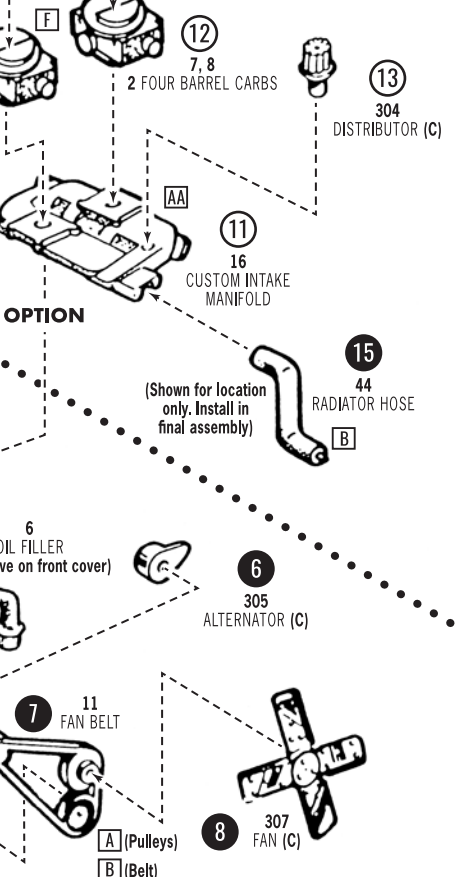
AMT® kits are molded from the finest high-impact styrene plastic. Use only paint and cement made for styrene. Trim excess plastic from parts before joining. When attaching "CHROME" or painted parts, scrape plating or paint away where parts are to be joined. Cement all parts unless otherwise indicated by the instructions. Use just enough cement to join parts and be careful not to smear cement on exposed surfaces.

Build according to the instructions on this sheet, you should have no trouble assembling your kit. Just FOLLOW THE NUMBERS as the instructions are numbered in order of assembly.

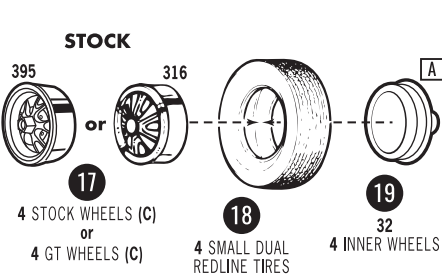
ENGINE-STOCK 1 - 16



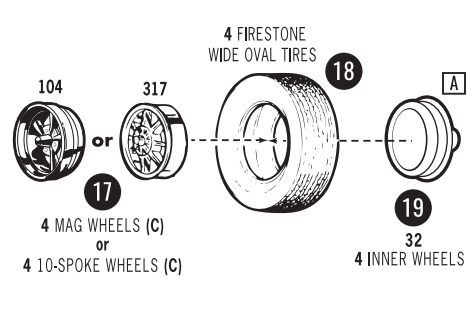
CUSTOM, RACING or DRAG



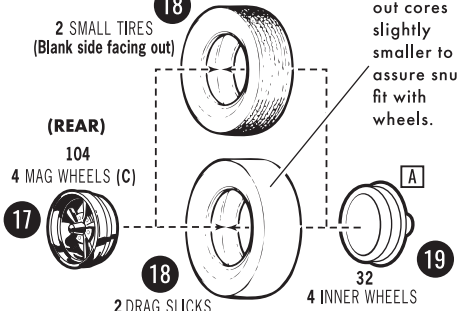
WHEELS 17 - 19



CUSTOM/RACING

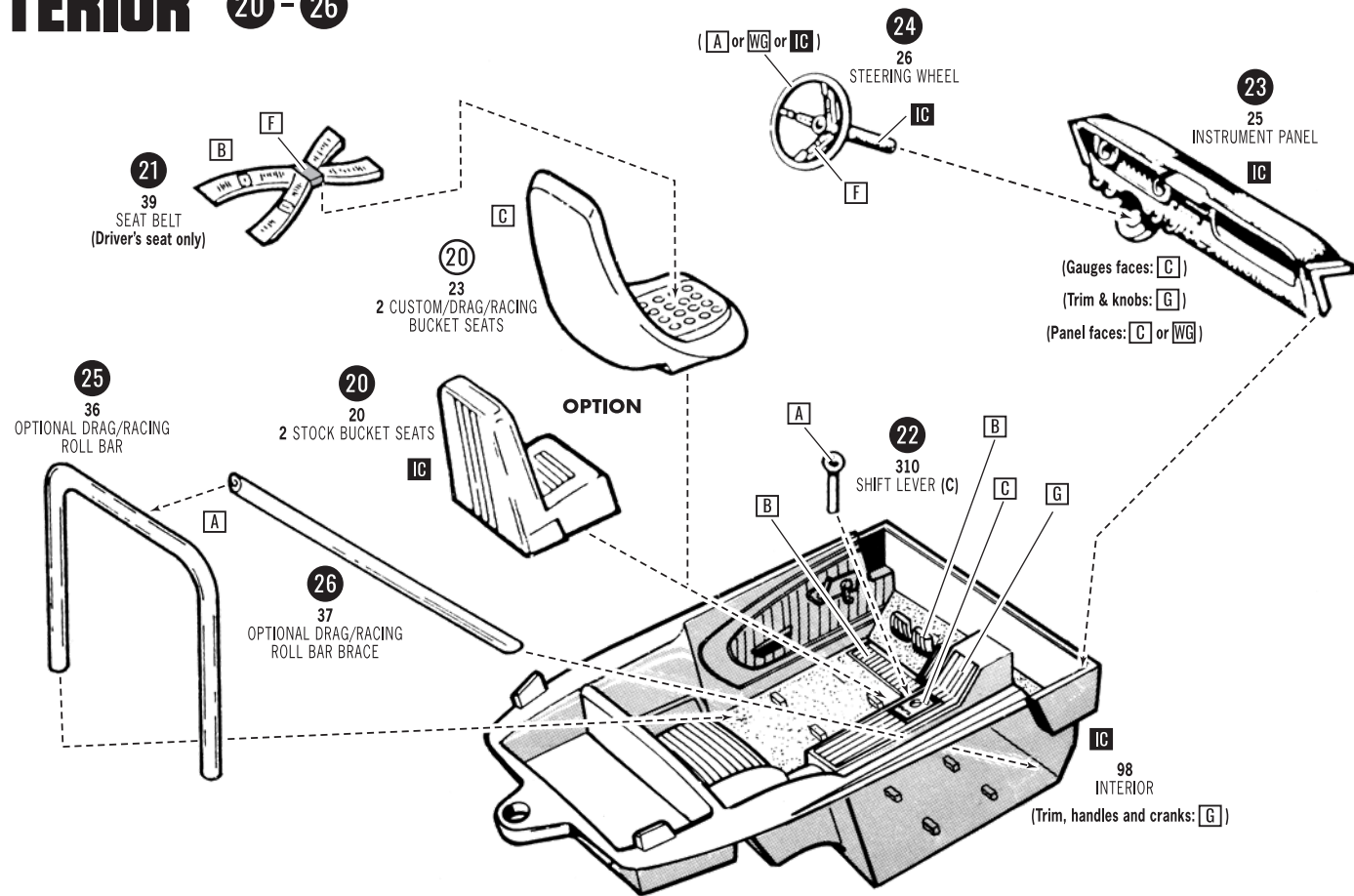


DRAG

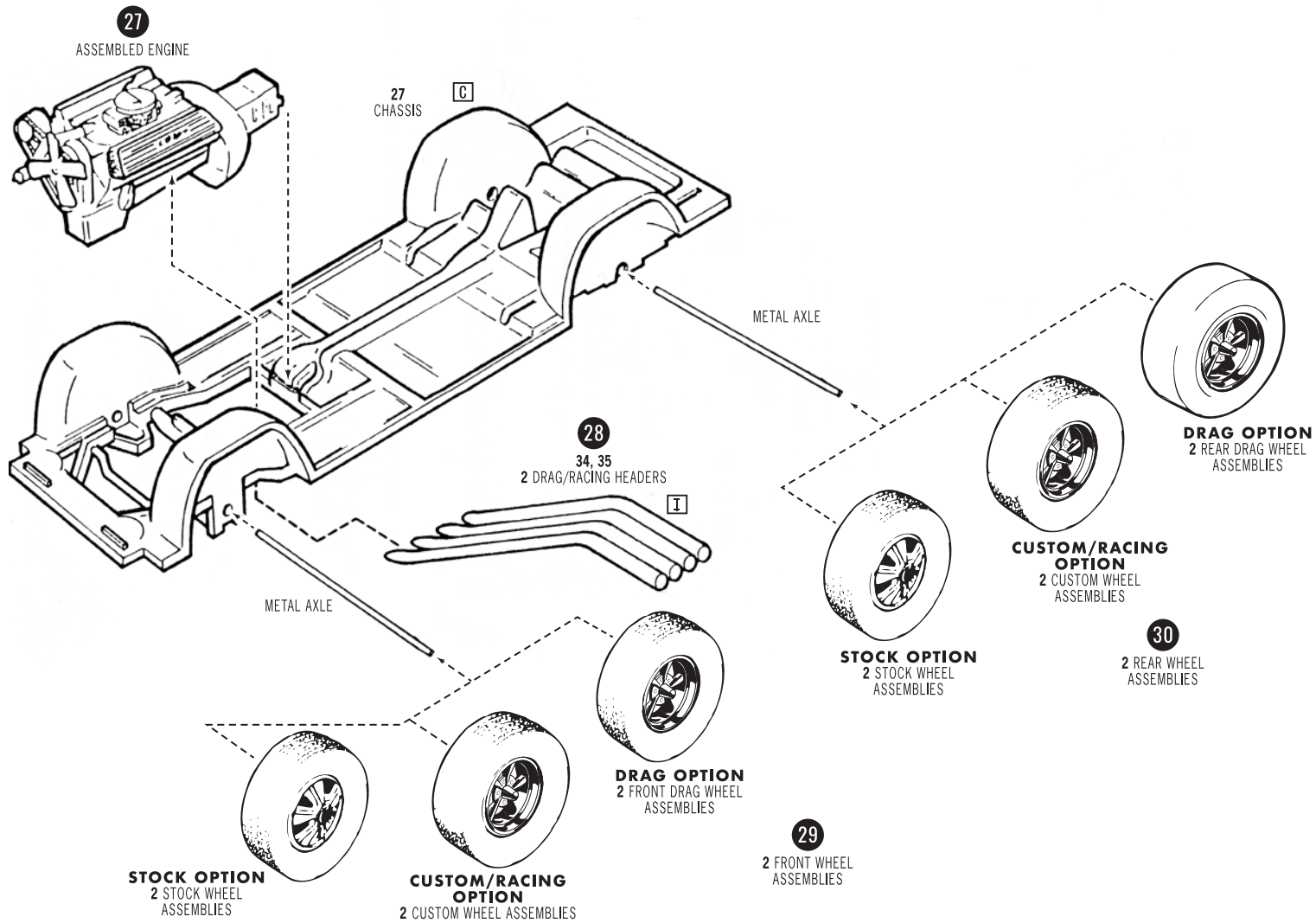


Ford Motor Company Trademarks and Trade Dress used under license to Round 2, LLC. All rights reserved. Distributed by Round 2 LLC. Firestone and F Shield Logo are registered trademarks of Bridgestone Brands, LLC and are used with permission. AMT and design is a registered trademark of Round 2, LLC. ©2023 Round 2, LLC, South Bend, IN 46628 USA. Product and packaging designed in the USA. Made in China. All rights reserved.

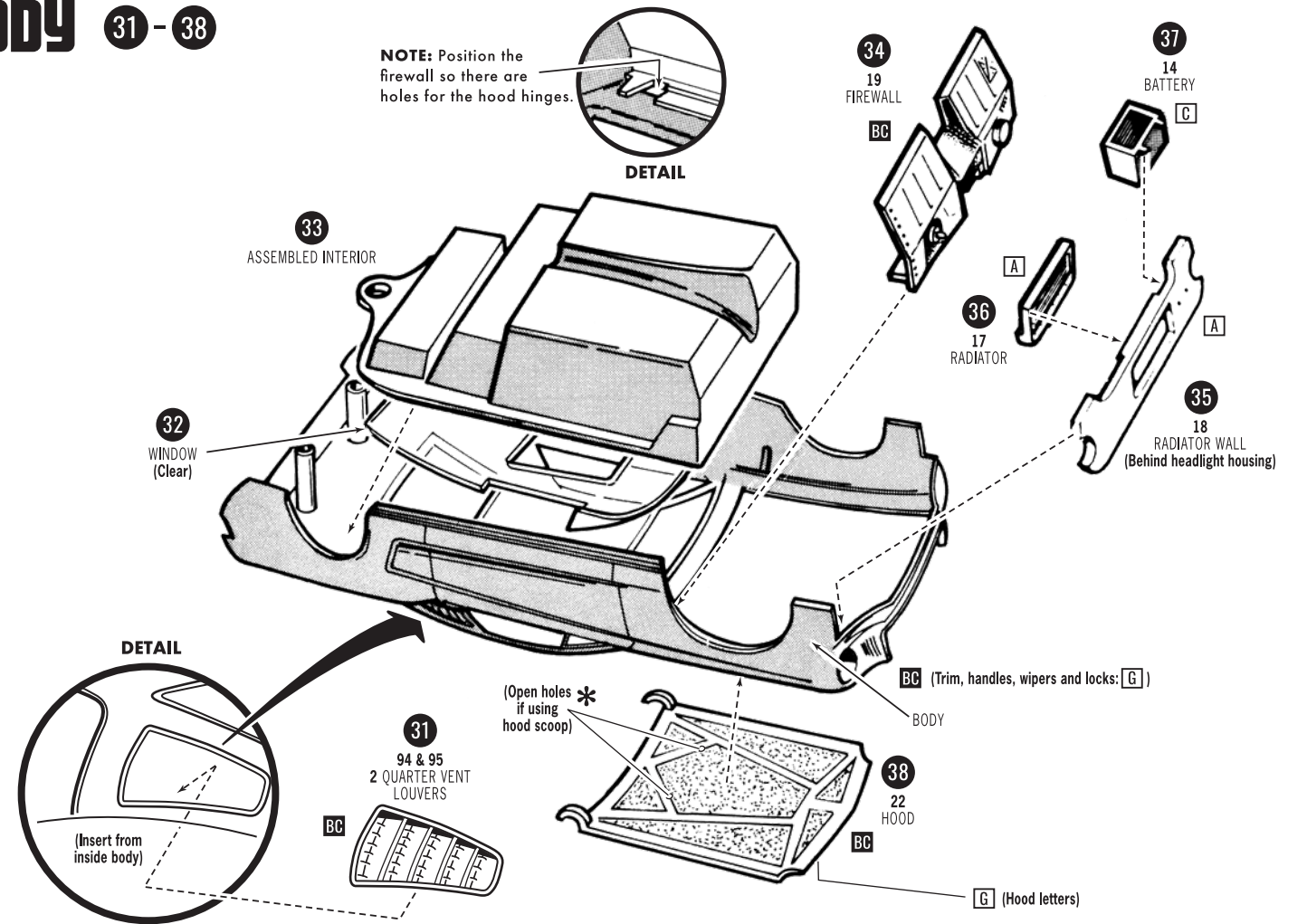
INTERIOR



ENGINE & WHEELS TO CHASSIS 27-30



BODY 31 - 38



FINAL ASSEMBLY-STOCK 39-52

