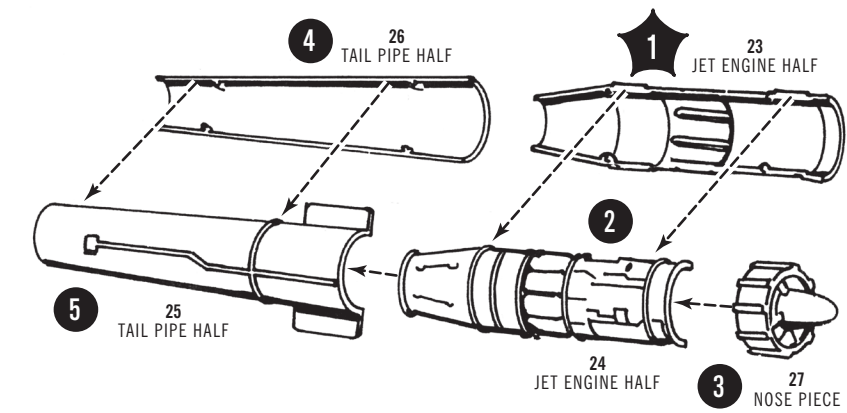
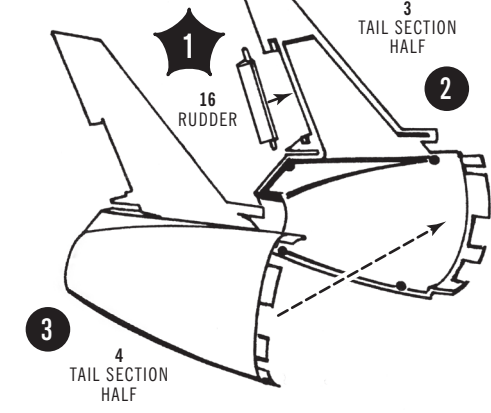


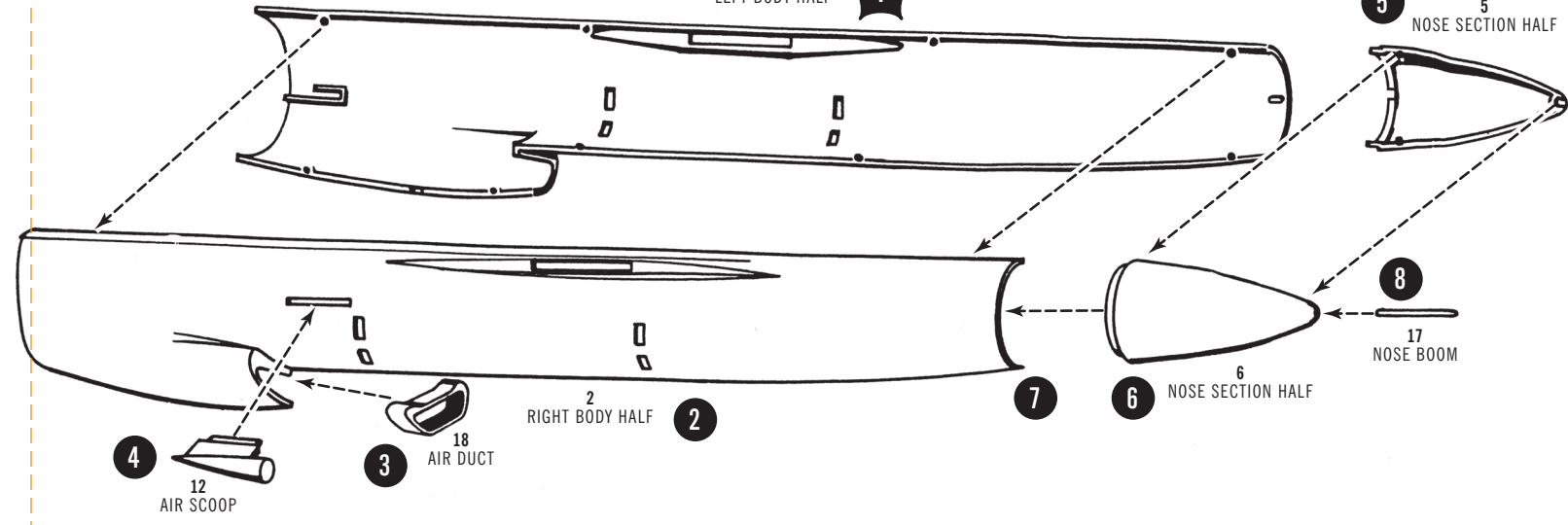
SNARK ASSEMBLY - 1. ENGINE



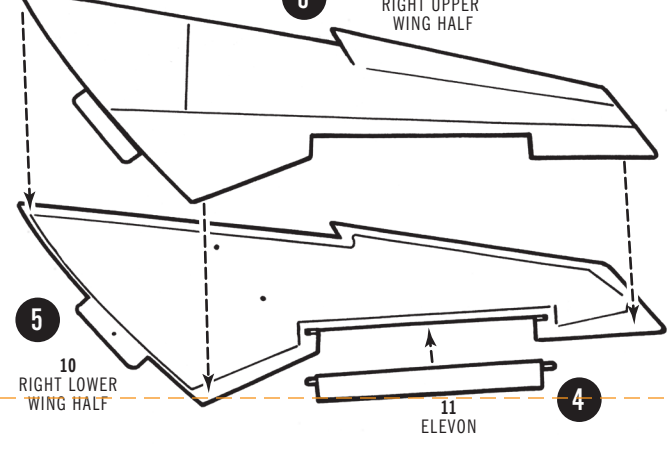
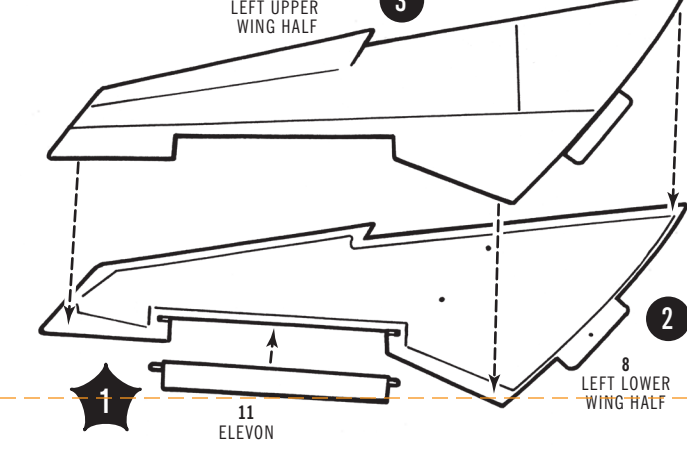
2. TAIL



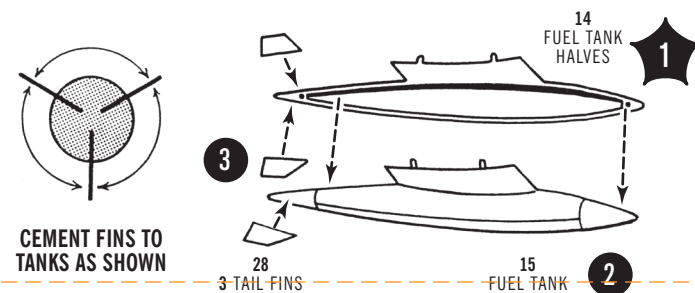
3. FUSELAGE



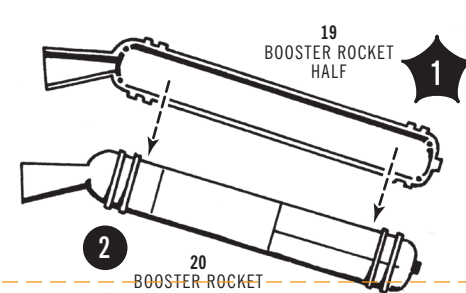
4. WINGS



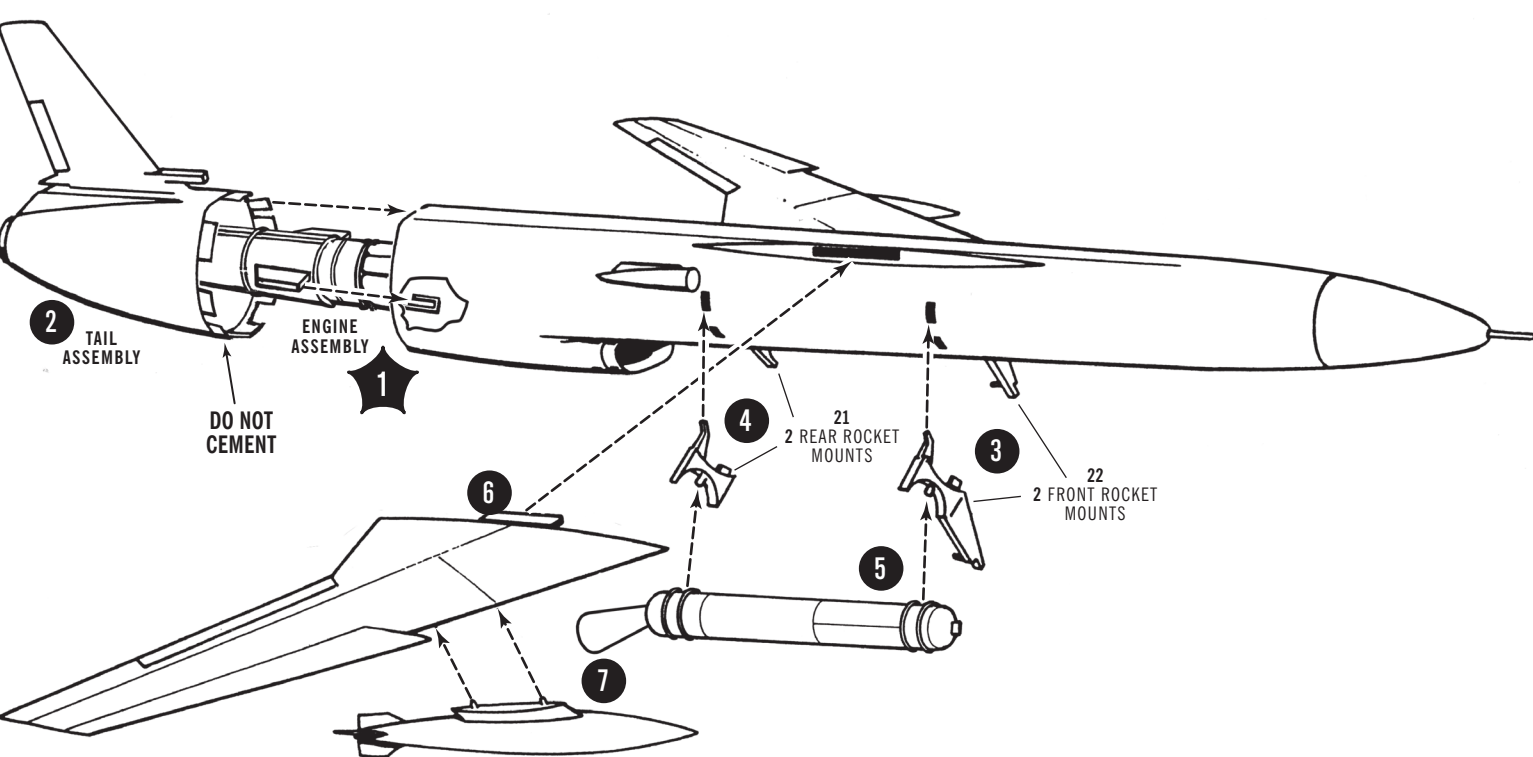
5. FUEL TANKS x2



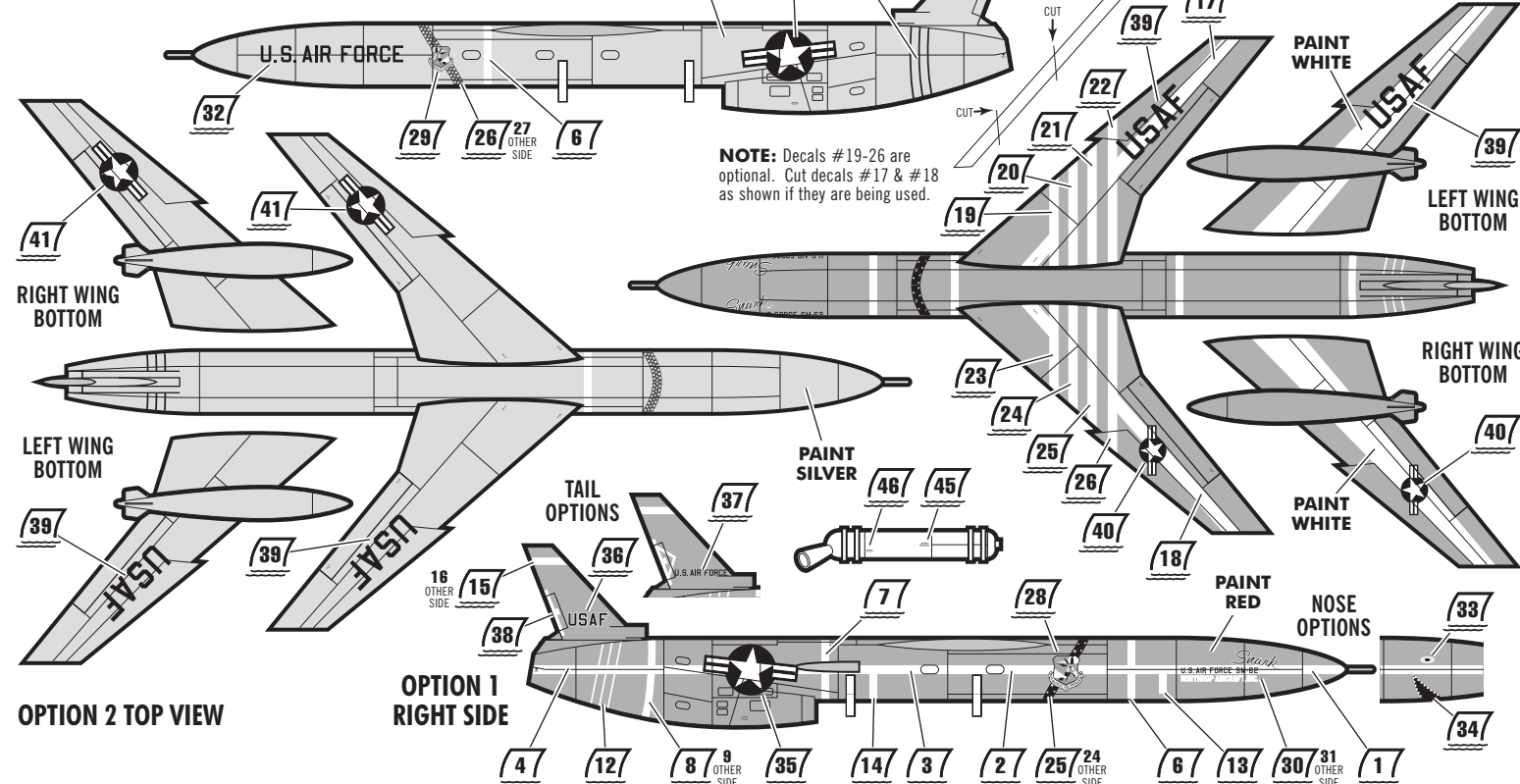
6. BOOSTER ROCKETS x2



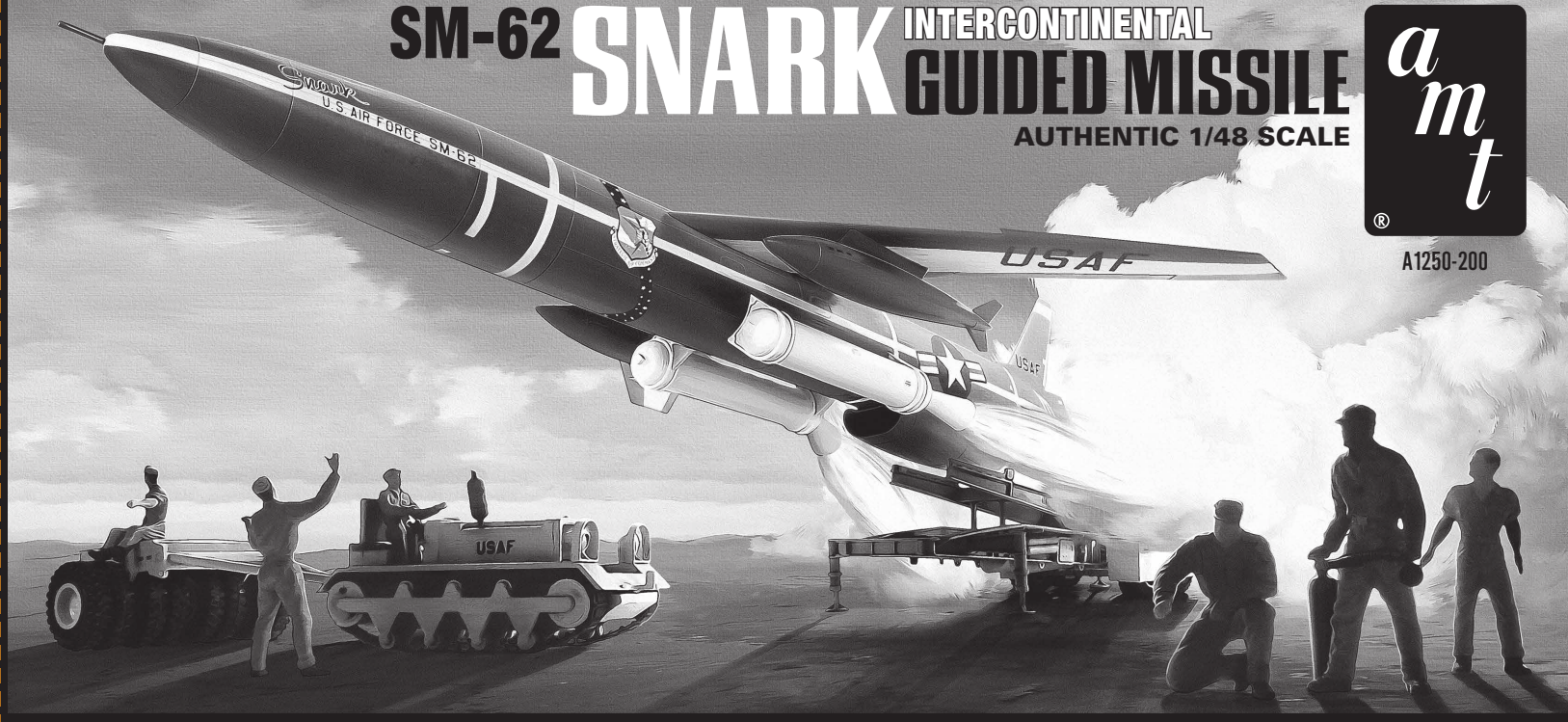
7. FINAL ASSEMBLY



8. DECAL PLACEMENT



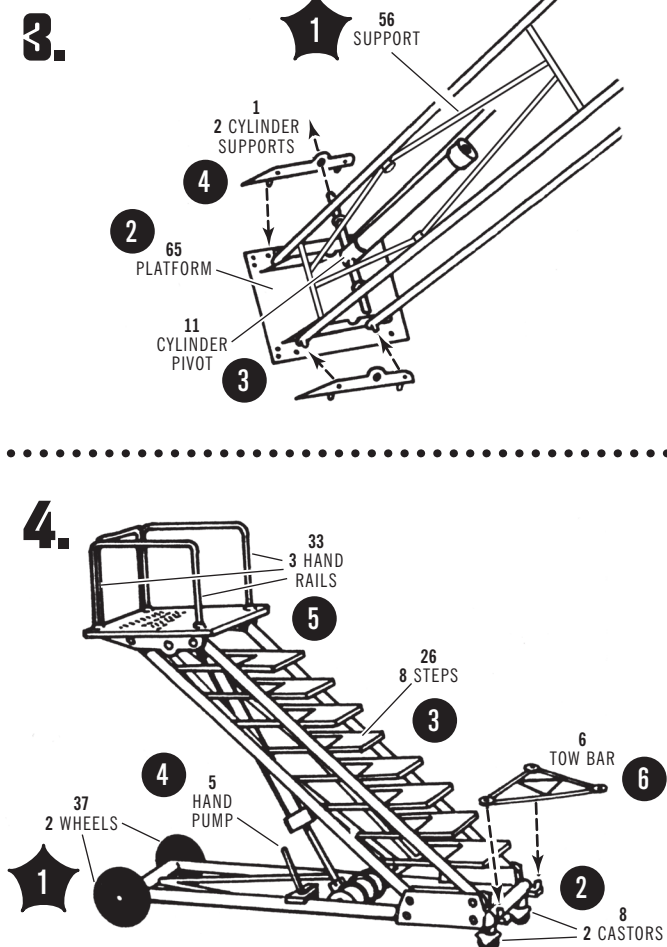
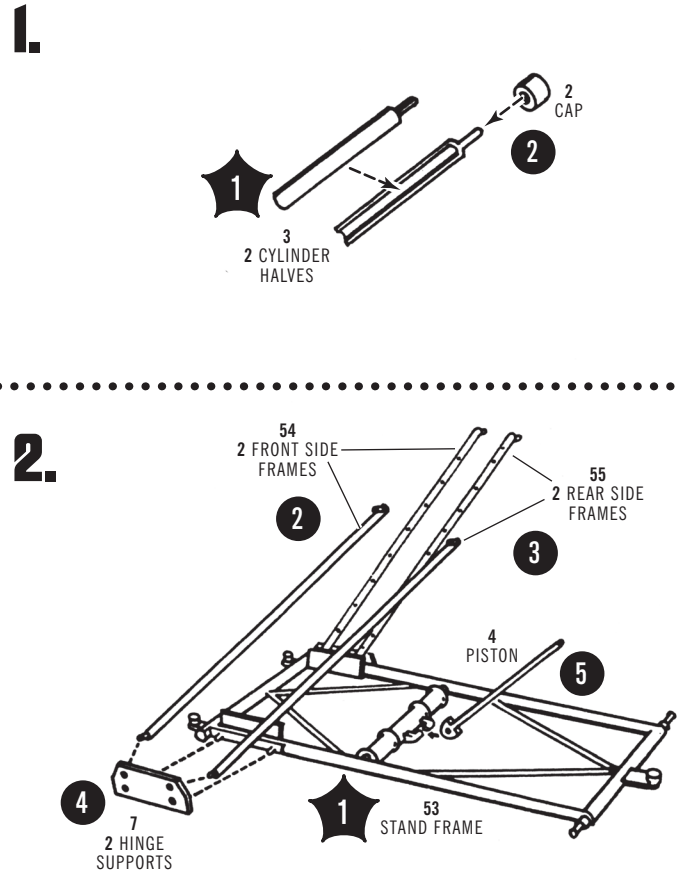
SM-62 SNARK INTERCONTINENTAL GUIDED MISSILE AUTHENTIC 1/48 SCALE



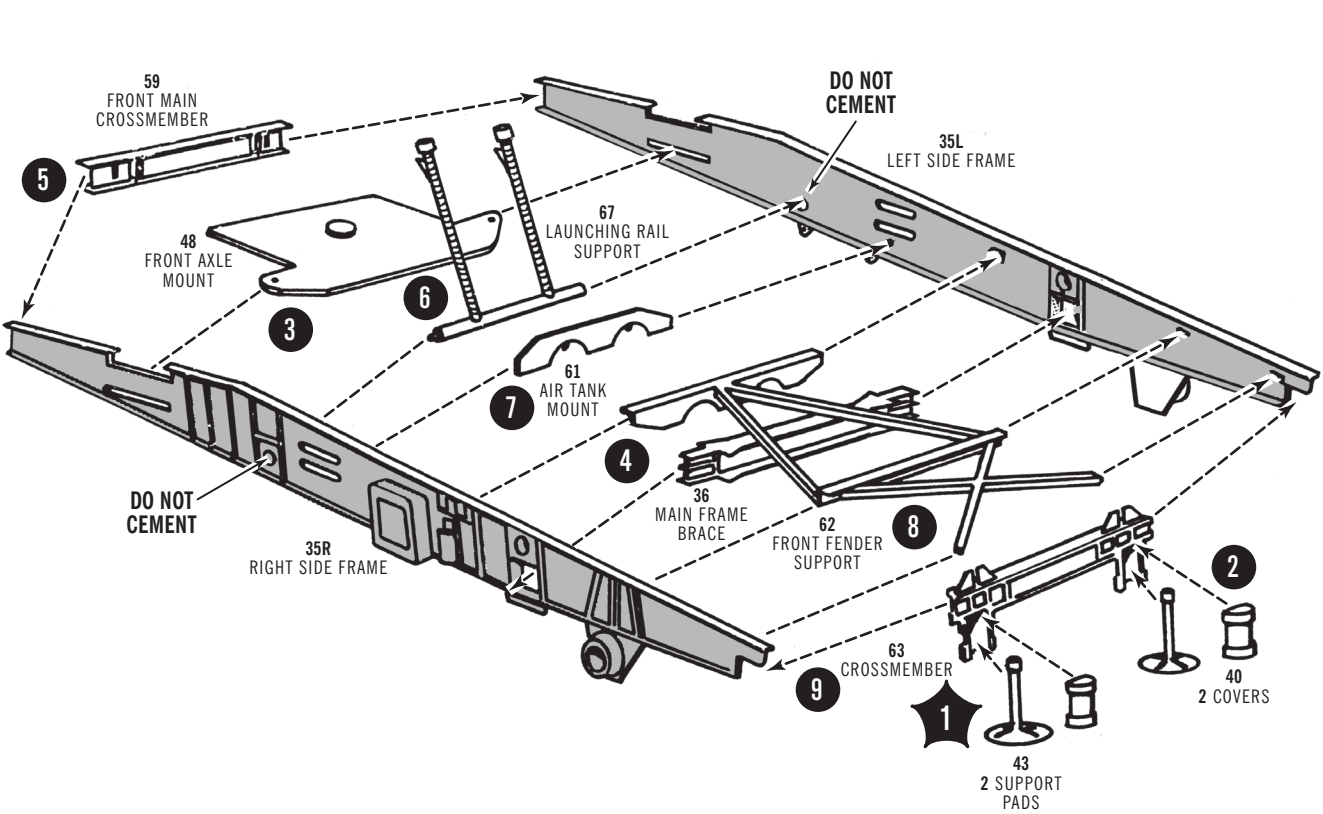
READ THIS BEFORE YOU BEGIN

Look over this instruction sheet carefully before you begin building. Follow the assembly instructions and "test-fit" the parts without cementing. This will familiarize you with the location of the parts.
Built according to the instructions on this sheet, you should have no trouble assembling your kit. Just FOLLOW THE NUMBERS, as parts are numbered in order of assembly.

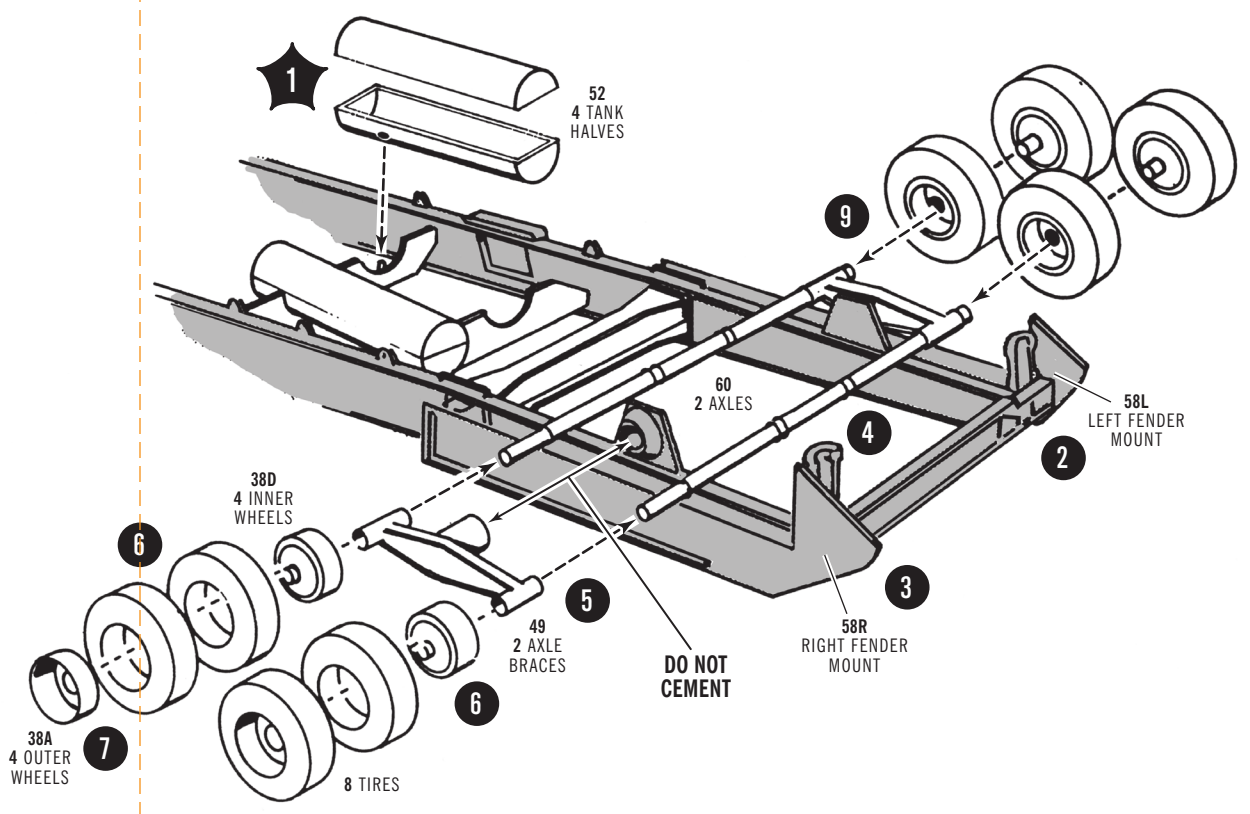
STAIR LIFT ASSEMBLY



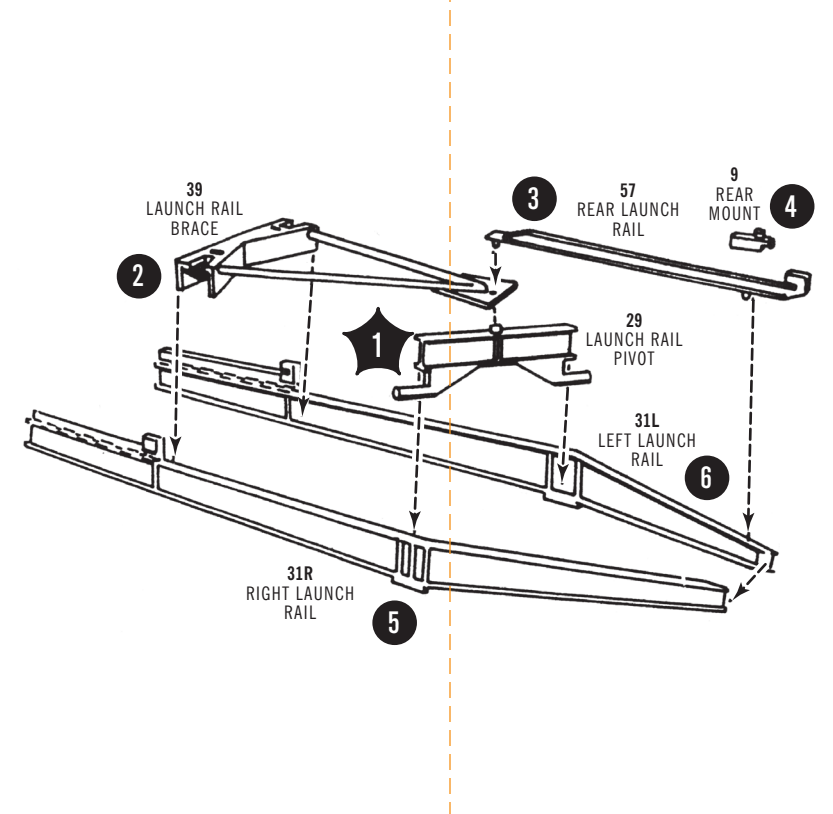
LAUCH PLATFORM ASSEMBLY - 1. FRAME



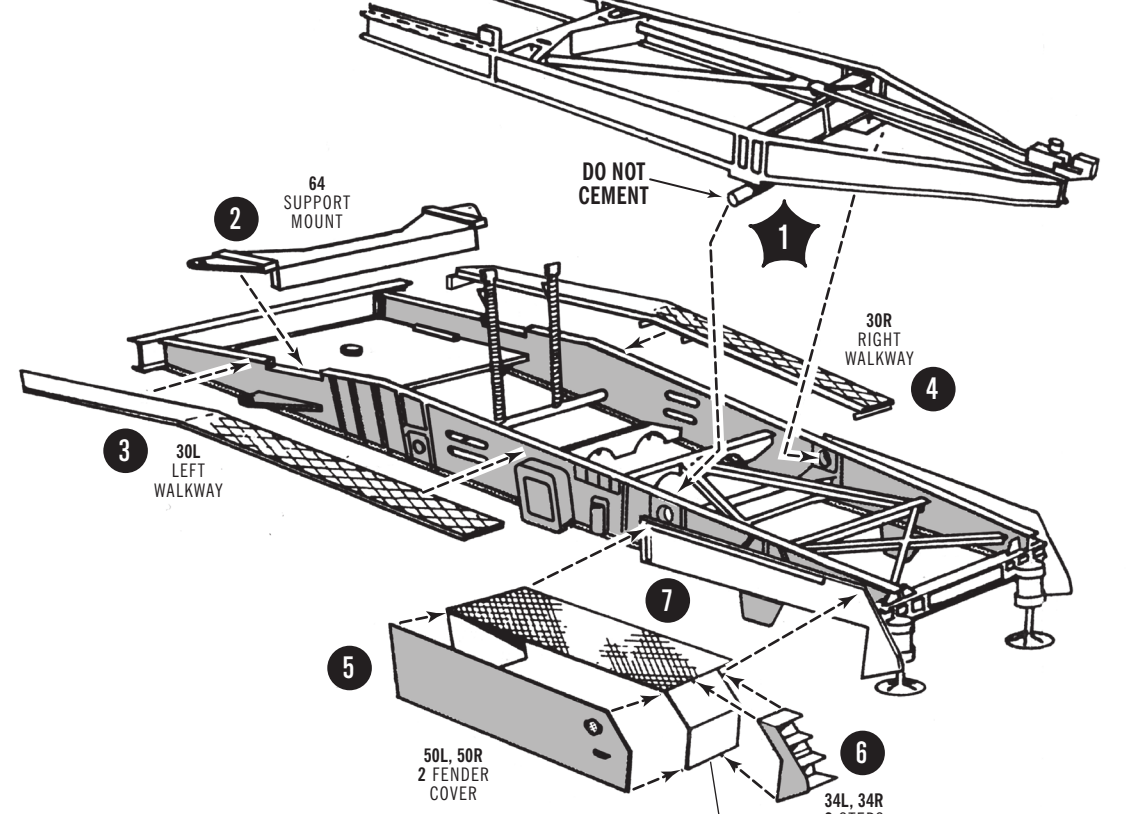
2. WHEELS PARTS SHOWN UPSIDE DOWN



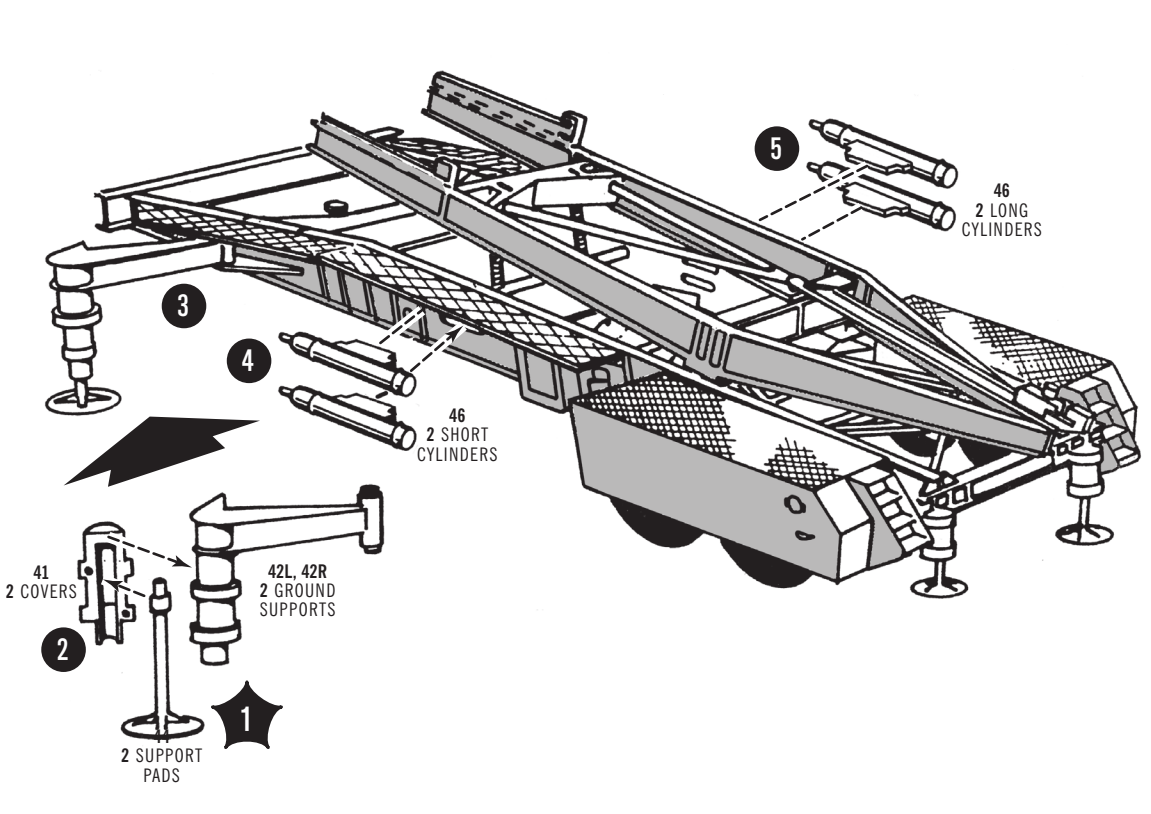
3. LAUNCHER RAIL UNIT



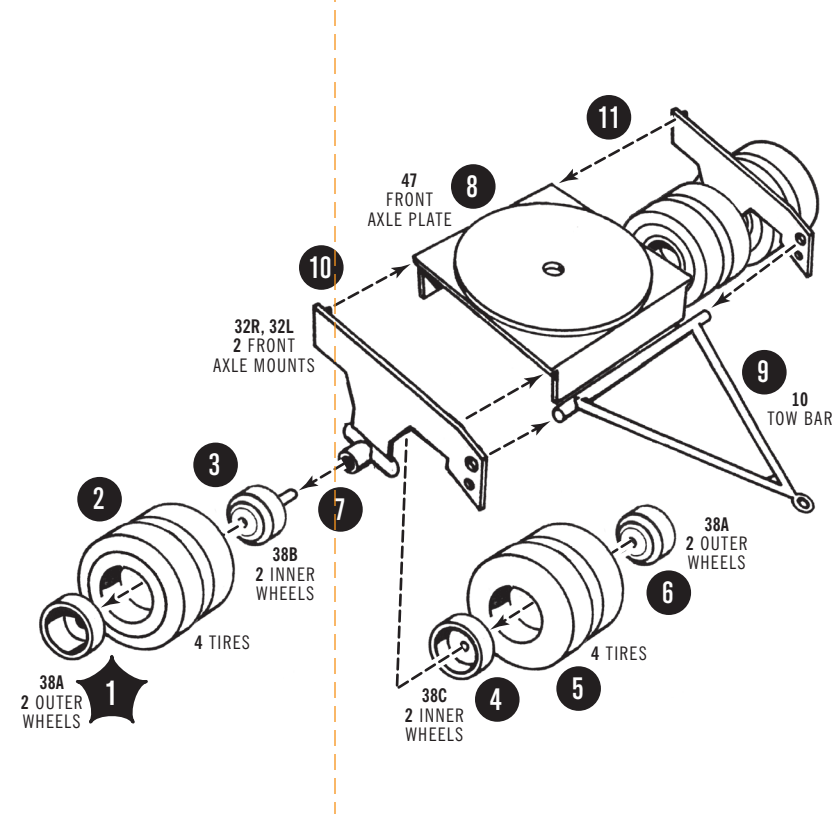
4. FENDERS



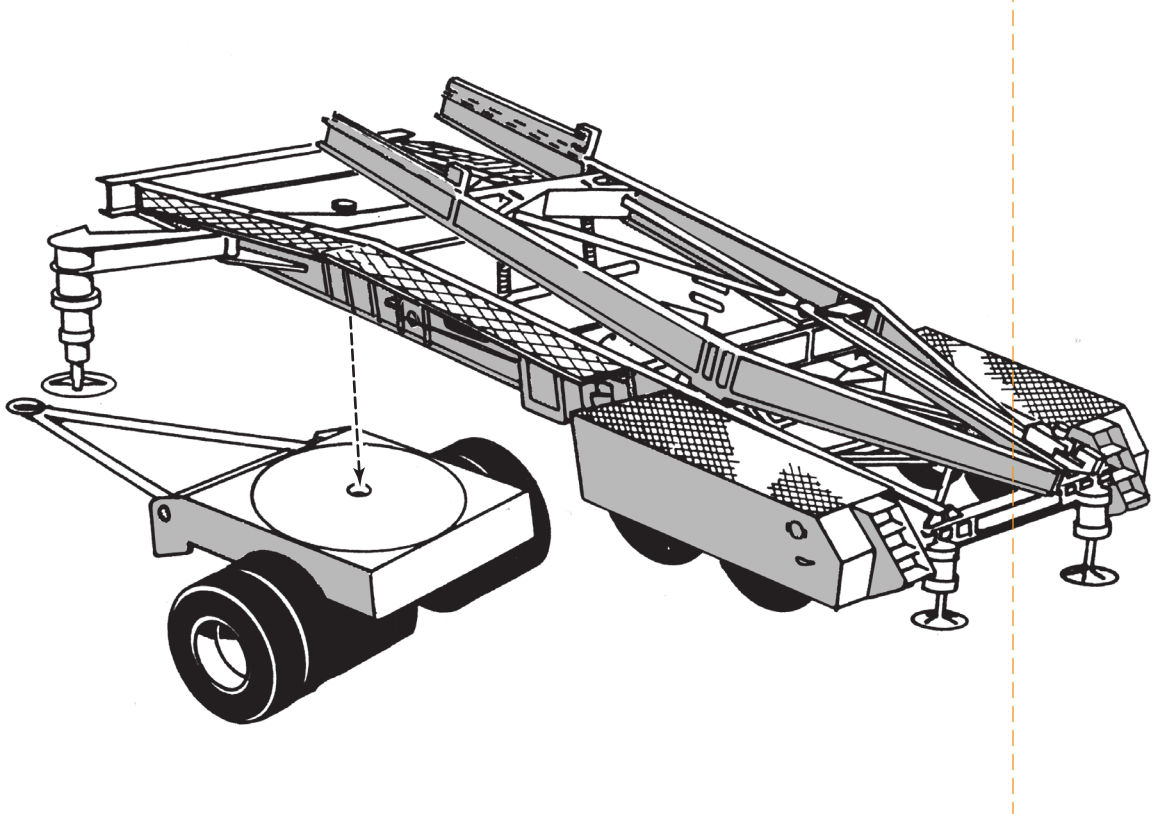
5. SUPPORTS



6. TRAILER ASSEMBLY



7. LAUCH PLATFORM FINAL ASSEMBLY



TRACTOR ASSEMBLY

