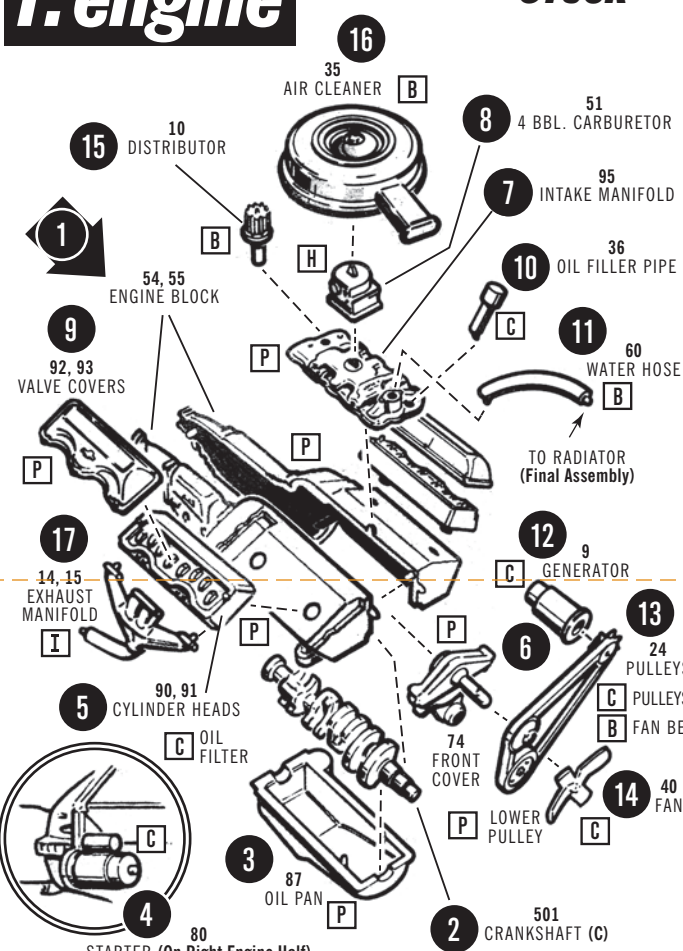


BASIC ASSEMBLIES

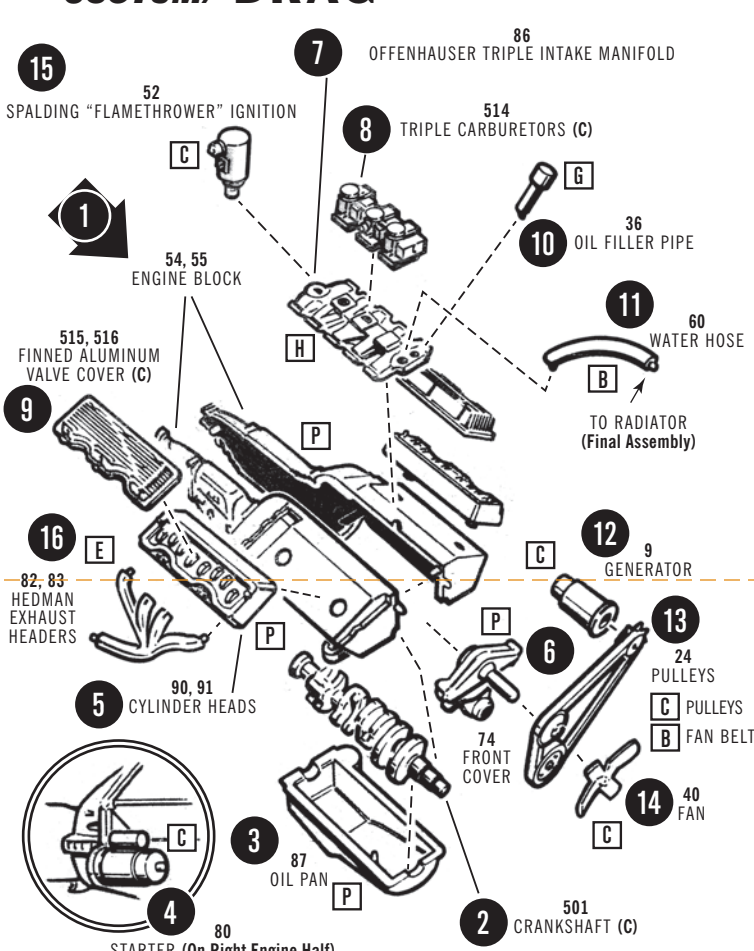
STEPS ARE NUMBERED IN ASSEMBLY ORDER

1. engine

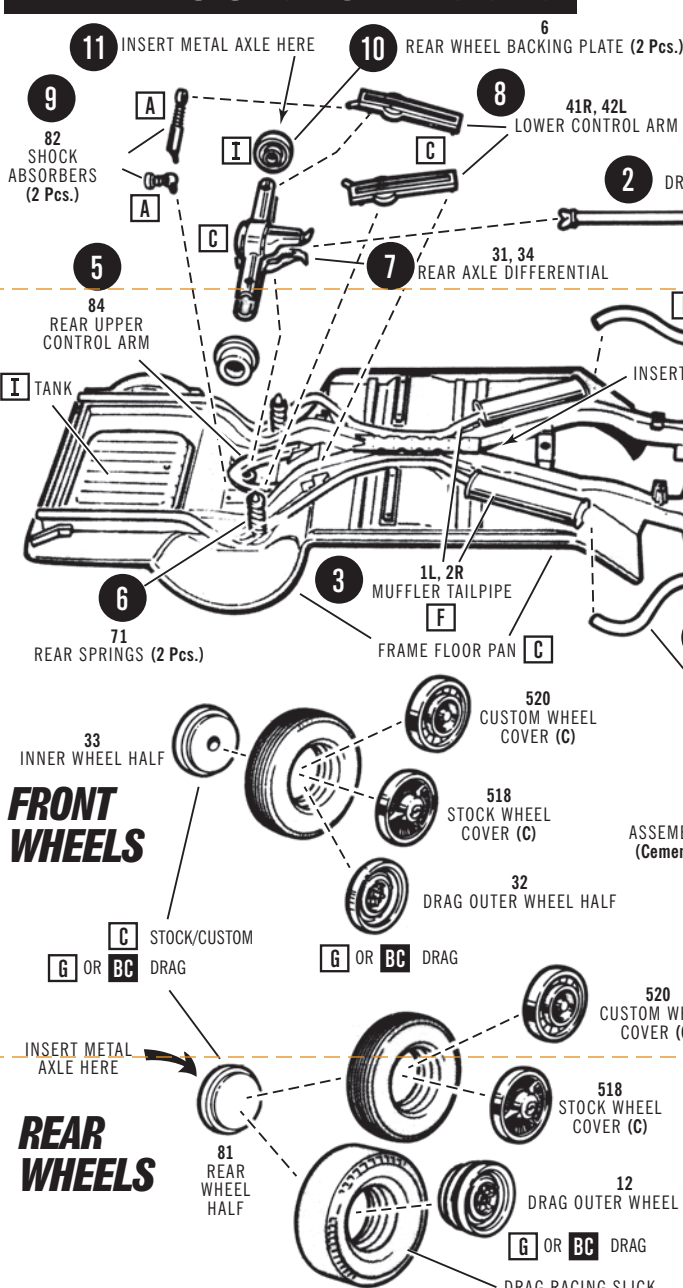
STOCK



CUSTOM/ DRAG



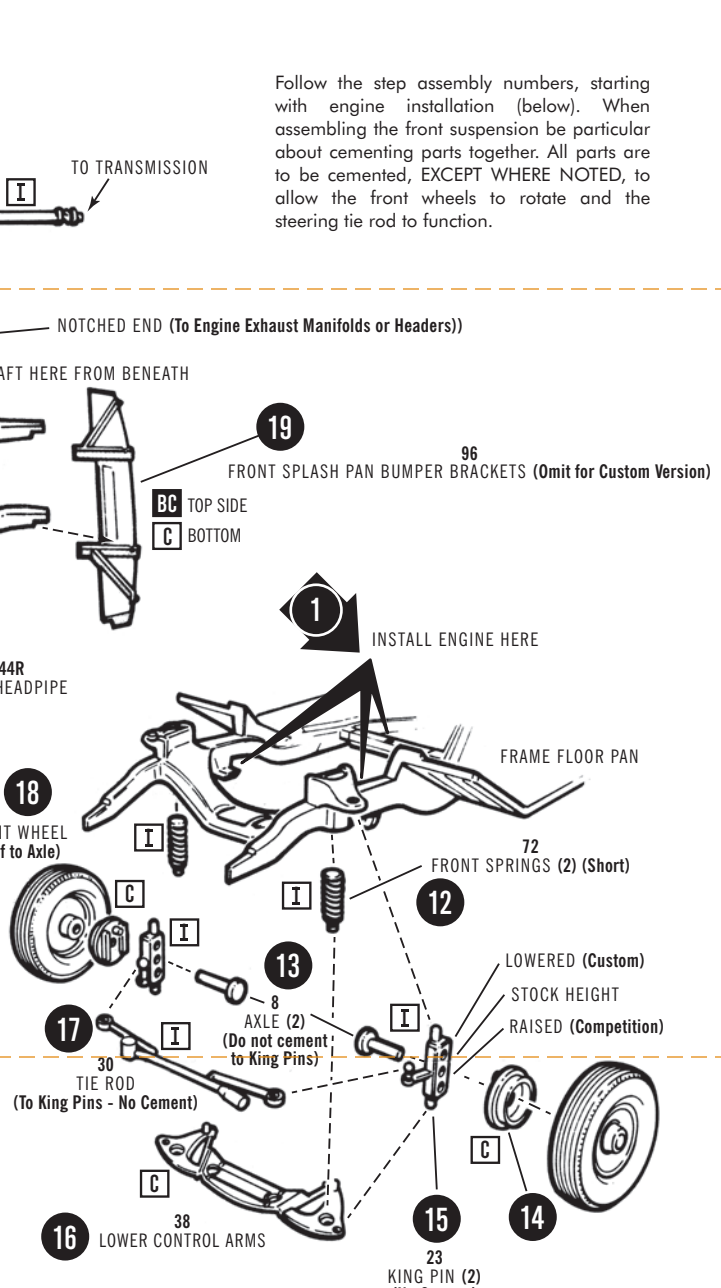
2. wheels-chassis



Follow the step assembly numbers, starting with engine installation (below). When assembling the front suspension be particular about cementing parts together. All parts are to be cemented, EXCEPT WHERE NOTED, to allow the front wheels to rotate and the steering tie rod to function.

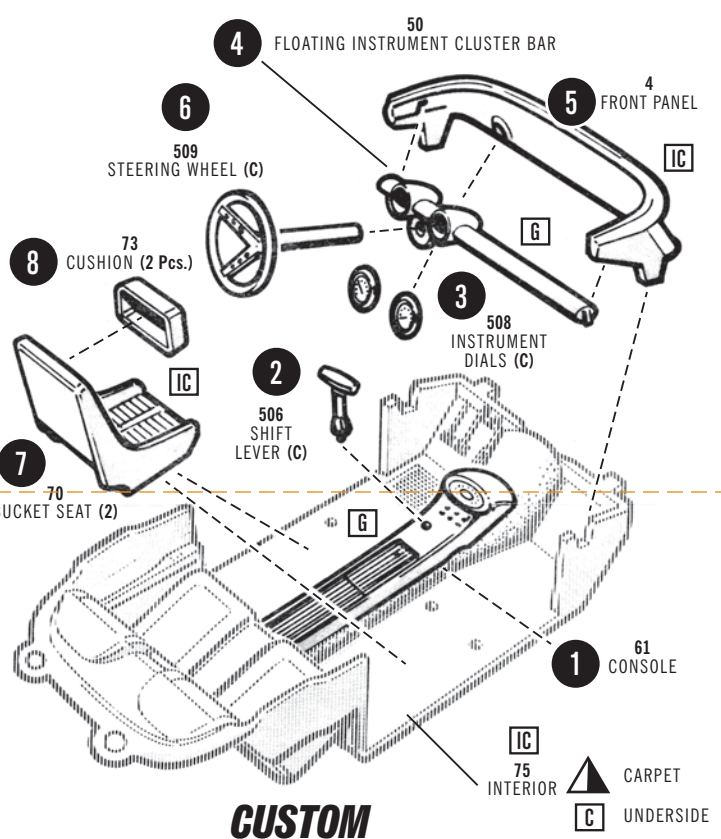
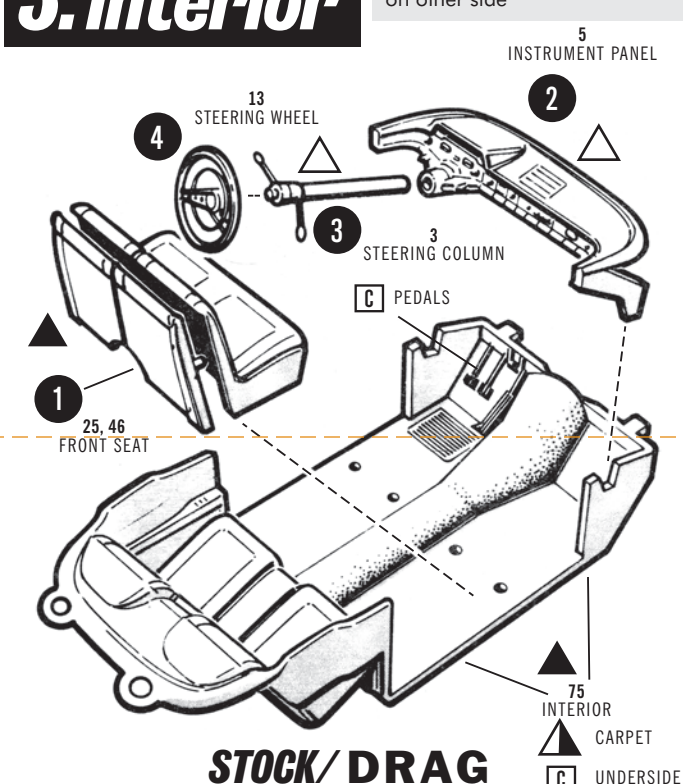
FRONT WHEELS

REAR WHEELS

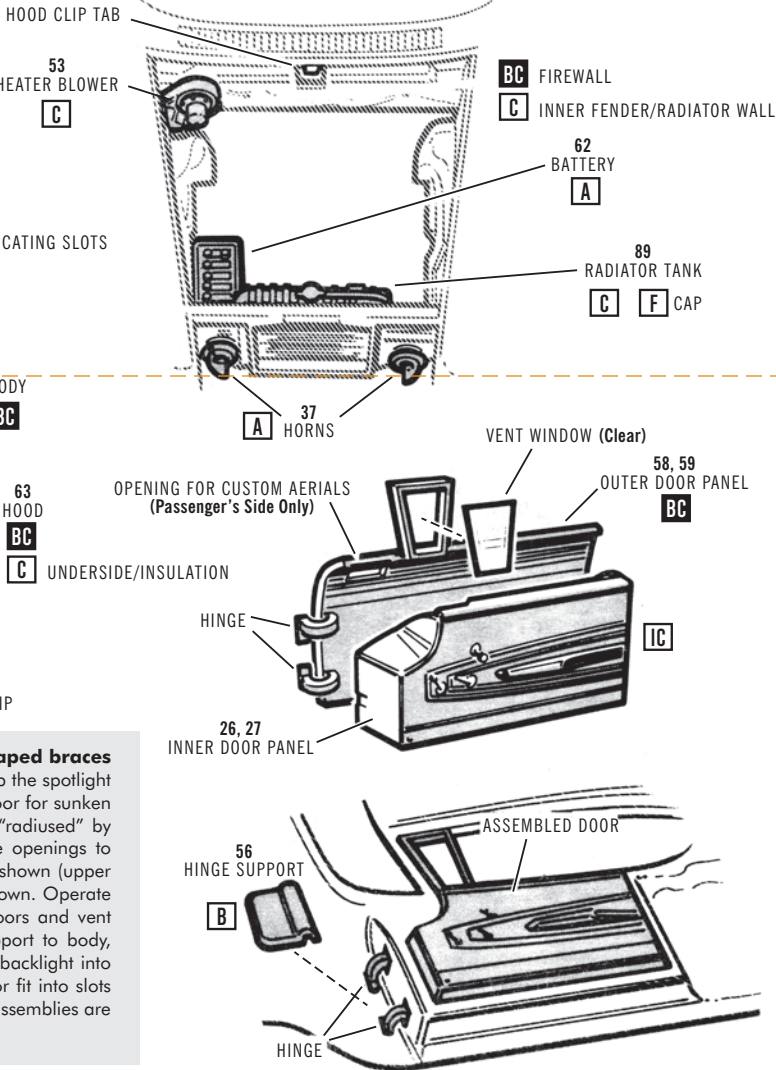
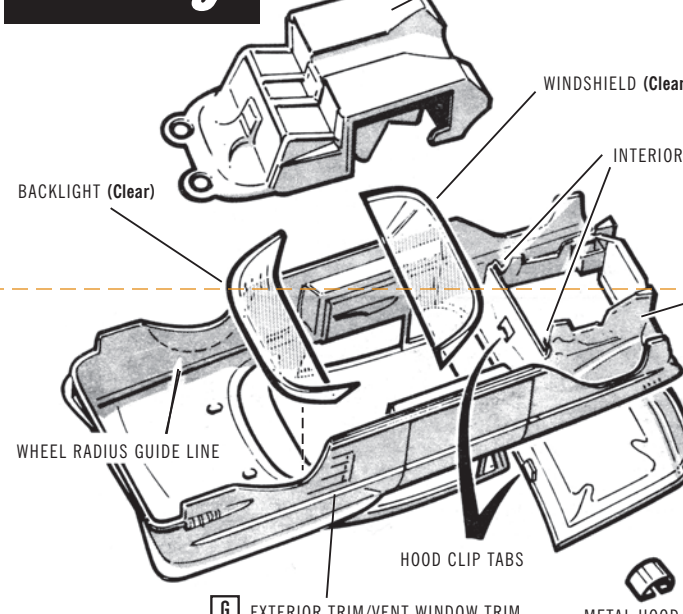


3. interior

NOTE: See interior painting tips on other side



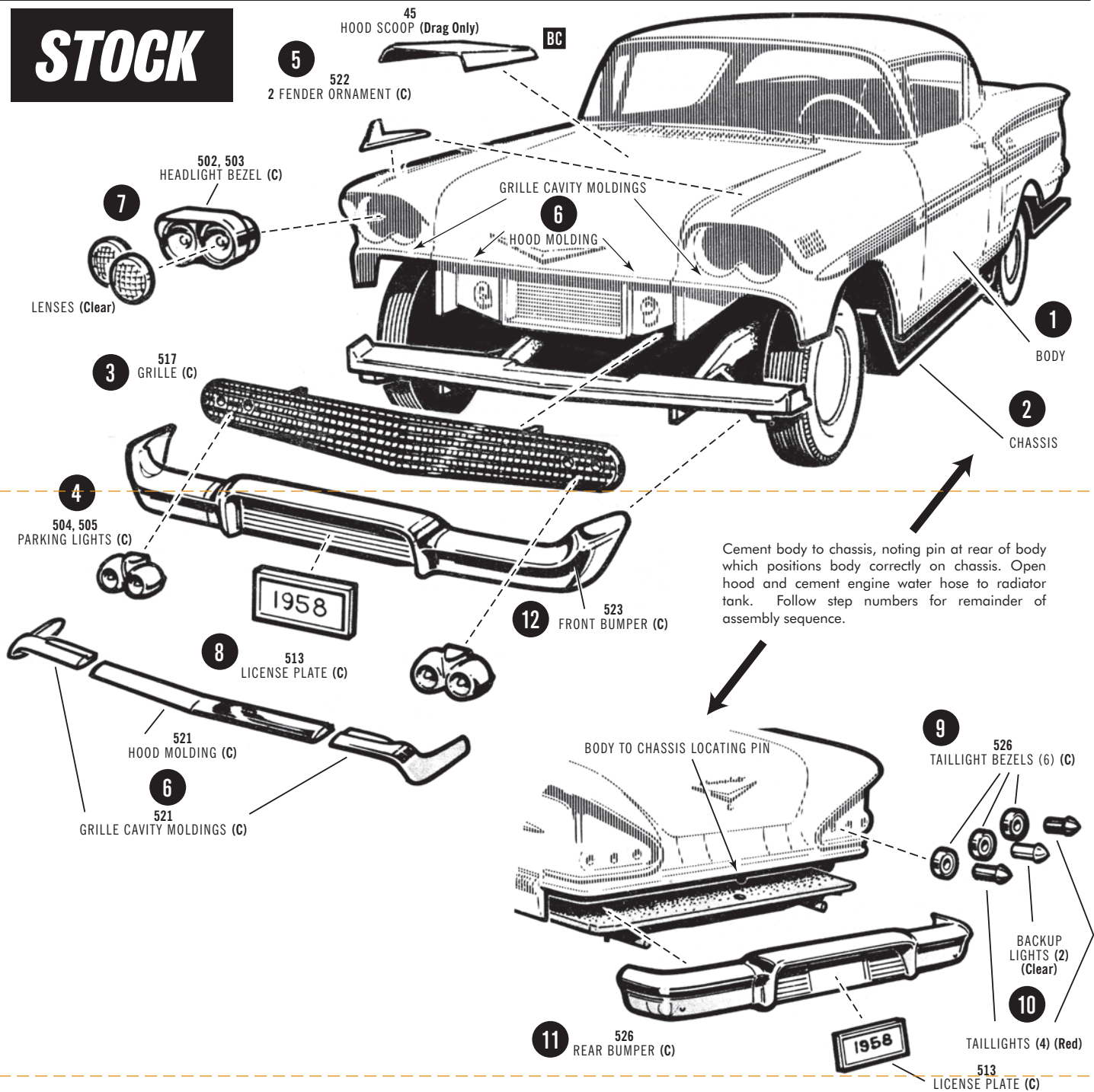
4. body



NOTE: Before beginning any body work, carefully trim out the X-shaped braces in the door openings. 1. CUSTOM version only: with a sharp knife, open up the spotlight holes by windshield corners, and the rectangular opening in passenger side door for sunken aerials. 2. If you are using racing slicks, the rear wheel openings must be "radiused" by trimming along the guide lines on the inside of the rear fenders. Sand the openings to eliminate any rough edges. 3. Install engine compartment parts in locations shown (upper right). 4. Place hood in position on body and press metal clip over tabs as shown. Operate hood a few times to be sure you have the clip on securely. 5. Assemble doors and vent windows. Insert door hinges through body openings and cement hinge support to body, allowing doors to open and close freely. 6. Carefully cement windshield and backlight into body. 7. Open both doors and install interior to body. Tabs at front of interior fit into slots indicated; loops at rear of interior for over corresponding body tabs. 8. Basic assemblies are now complete. Go on to the final assembly for the version of your choice.

FINAL ASSEMBLIES

STOCK



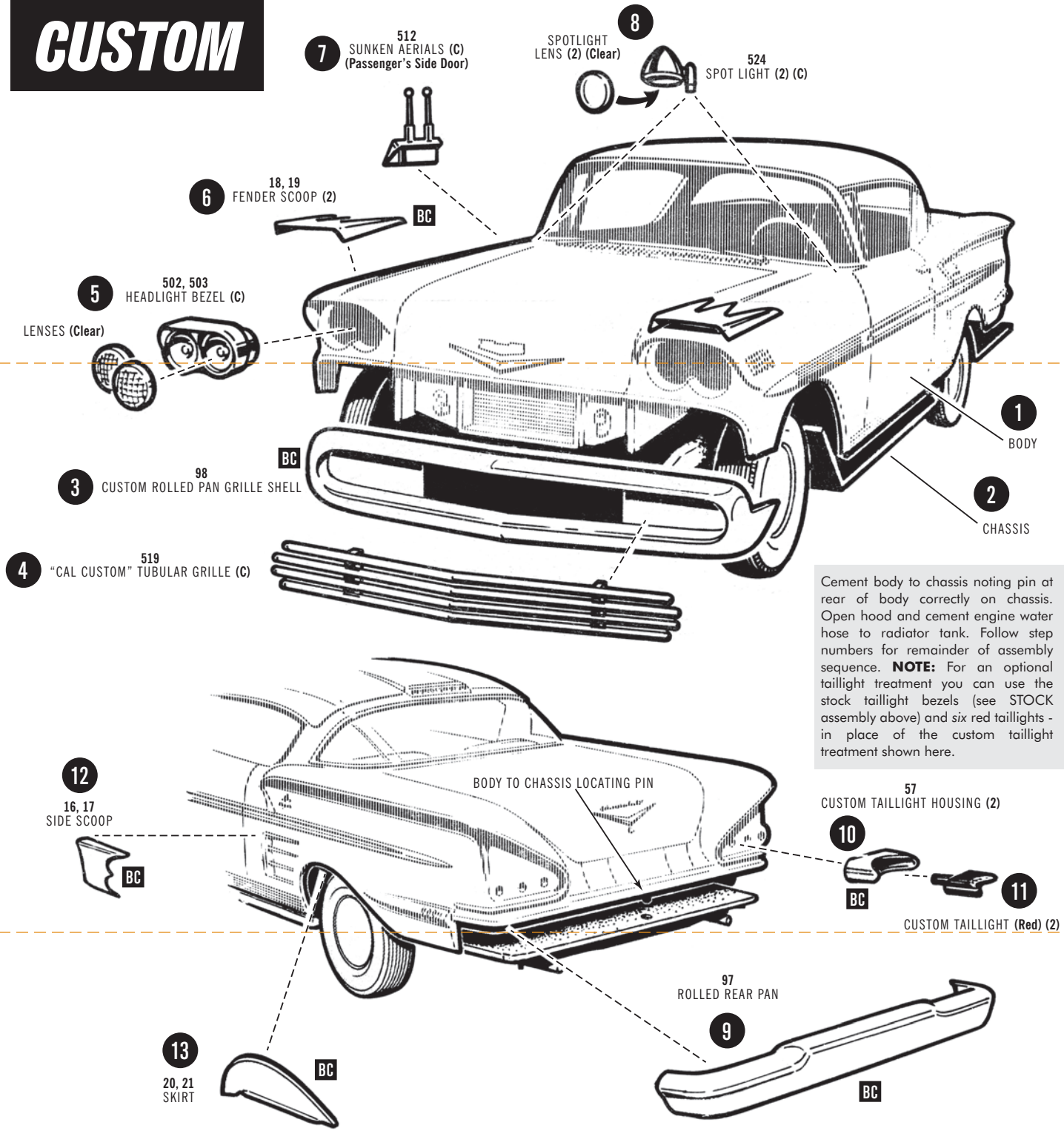
DRAG

Final assembly of your racing "shaker" follows the same procedure as the stock version (above), adding hood scoop.

NOTE: The following items may be omitted:

fender ornaments, license plates and, for drag racing, the front bumper.

CUSTOM



PAINT COLORS

A Black	H Aluminum	O Transparent Red	V Dark Blue
B Flat Black	I Steel	P Orange	W Transparent Blue
C Semi-Gloss Black	J Brass	Q Yellow	X Lt. Green
D White	K Gold	R Tan	Y Dark Green
E Flat White	L Amber	S Brown	Z Gray
F Silver	M Transparent Amber	T Lt. Blue	AA Purple
G Chrome (Bright Silver)	N Red	U Med. Blue	BB Beige

INTERIOR PAINTING TIPS

The 1958 Impala interior colors featured two-tone upholstery with a lighter, contrasting color used for the headliner and seat inserts: Black/Light Gray Contrast • Blue, Coral, Turquoise, Gold/Tan Contrast • Green, Red/White Contrast

Front Seat Side Trim. Rear Seat Trim & Speaker Grille: **G**

Steering Wheel: Horn Ring & Center Bar Trim: **G**

Instrument Panel: Trim: **G**, Gauges & Radio Face: **C**

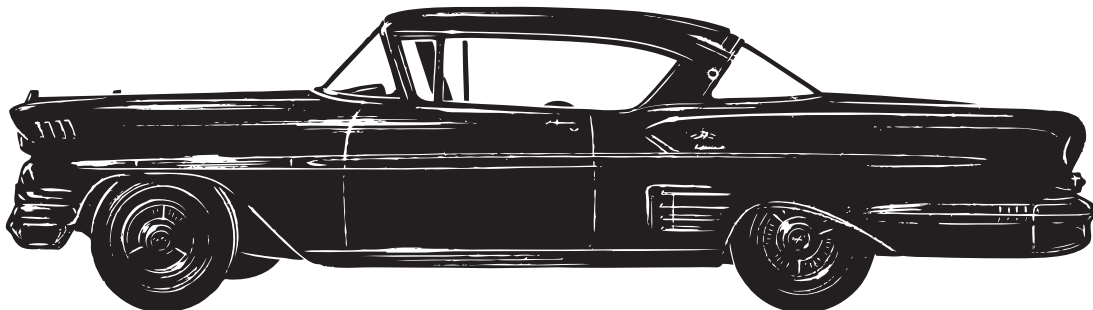


GENERAL MOTORS Trademarks used under license to Round 2, LLC. Firestone and the F-Shield Logo are registered trademarks of Bridgestone Brands, LLC and are used with permission. AMT and design and Round 2 and design are trademarks of Round 2, LLC. ©2022 Round 2, LLC, South Bend, IN 46628 USA. Product and packaging designed in the USA. Made in China. All rights reserved.

'58 CHEVROLET® Impala™ Sport Coupe



Trophy
SERIES
1/25TH
SCALE
MODEL



This kit may be built **ONE OF THREE WAYS**. Look over this instruction sheet carefully before you begin building. You may decide to combine parts from the different versions shown, or use parts from other AMT® kits for a really personalized model. After you've planned your car, follow the assembly instructions **WITHOUT CEMENTING** the parts together. This will familiarize you with the location of parts.

For neatest job, the various sub-assemblies and components should be painted before any chrome parts are attached. For example: in building the custom version, all non-chrome parts such as scoops, pans, skirts, etc. (except

the clear window assembly) should be painted as a unit for a smooth, professional-looking finish.

AMT® kits are molded from the finest high-impact styrene plastic. Use only paint and cement made for styrene. Trim excess plastic from parts before joining. When attaching **CHROME** parts (indicated by "C" after part names), scrape plating or paint away where parts are to be joined. Cement all parts unless otherwise indicated by the instructions. Use just enough cement to join parts and be careful not to smear cement on exposed surfaces.



AMT1301-200